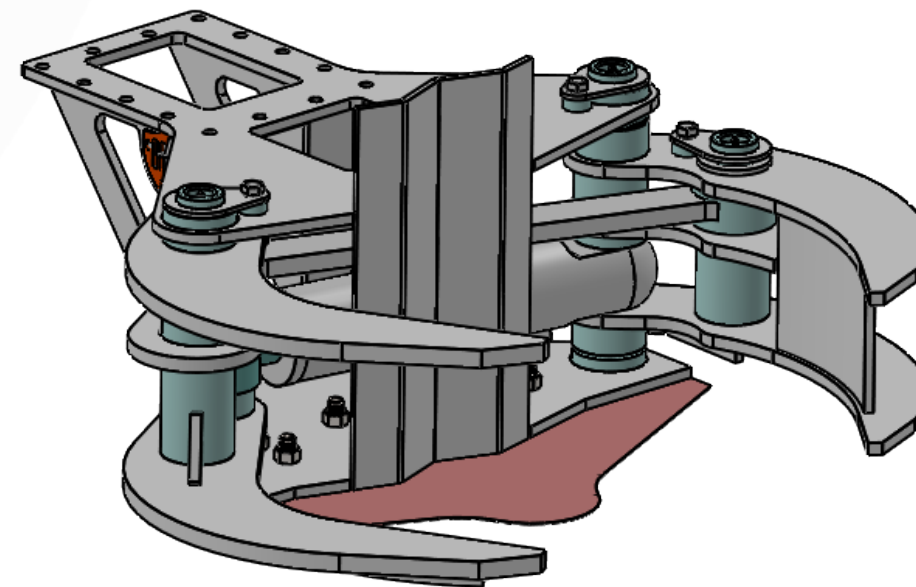
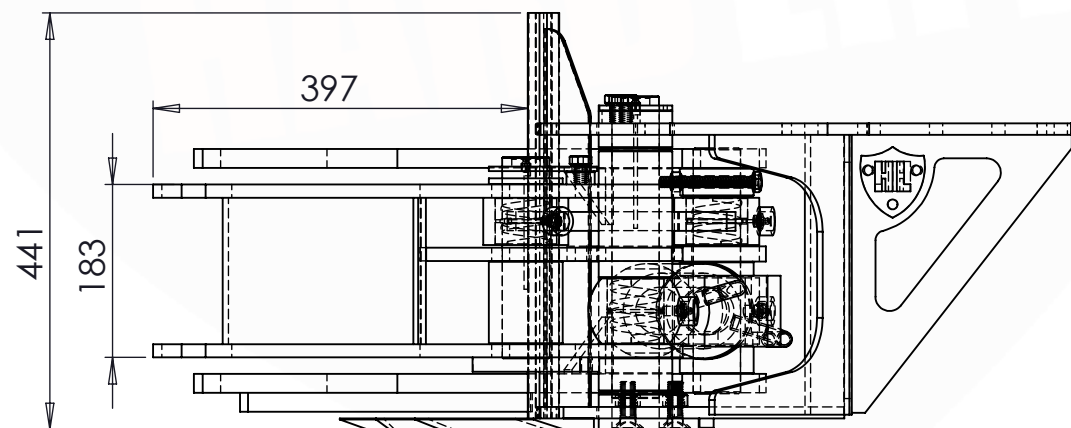
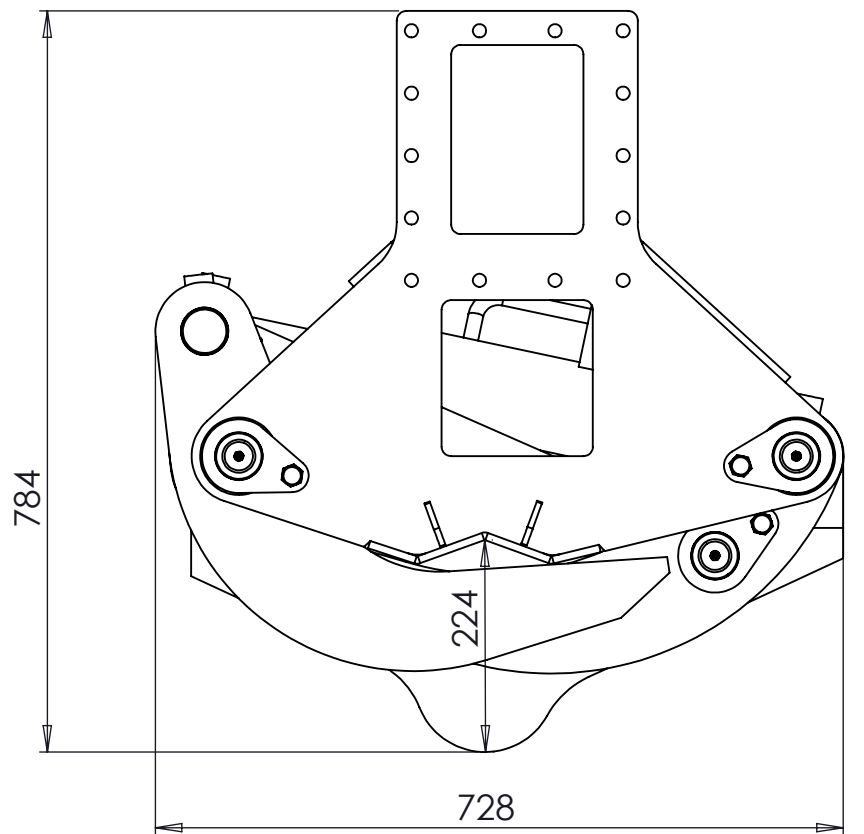
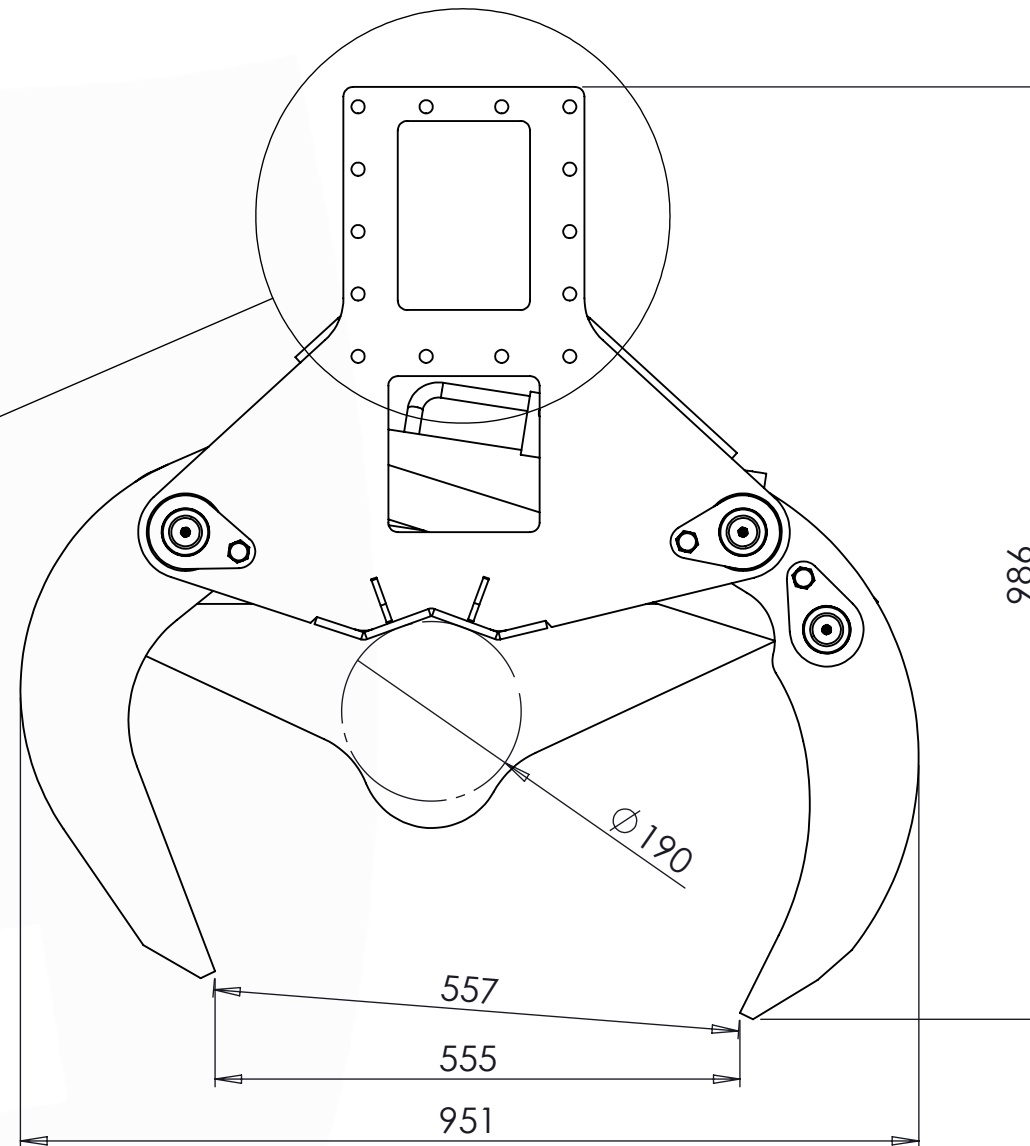
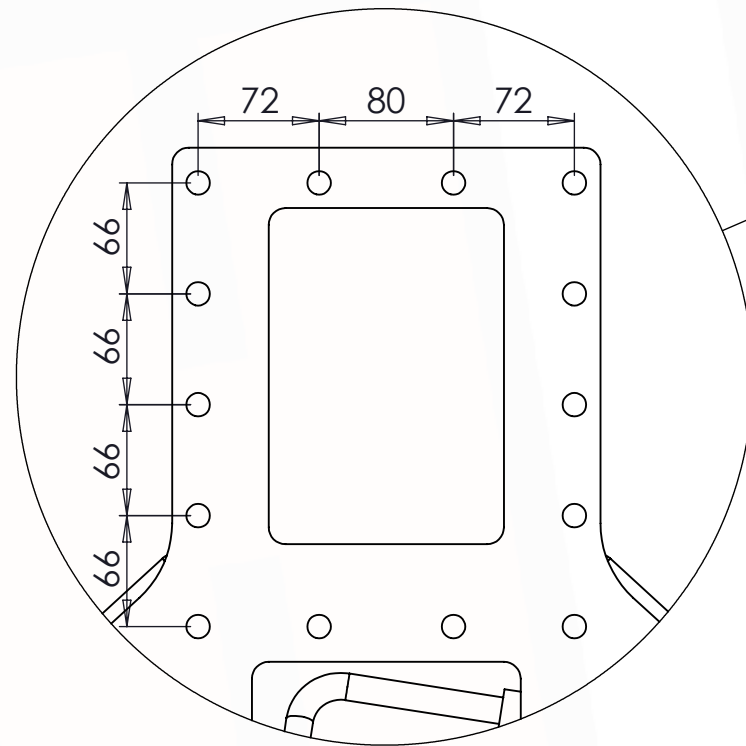
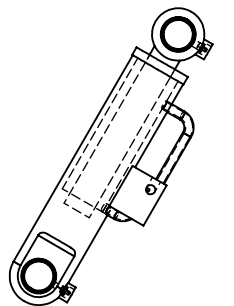


HEADSTOCK



Cylinder:

Bore Ø: 80mm
Rod Ø: 50mm
Closed Centres: 480mm
Stroke: 160mm
Ports: G3/8" BSP



Part No : 020-TSH

Machine Class : 2-3.5 Tonne

Product : Tree Shear

Weight : 177 kg

This drawing is the sole property of Hardlife (UK) Ltd.

	S355		HB400		HB500
	EN8		HB450		CAST ALLOY