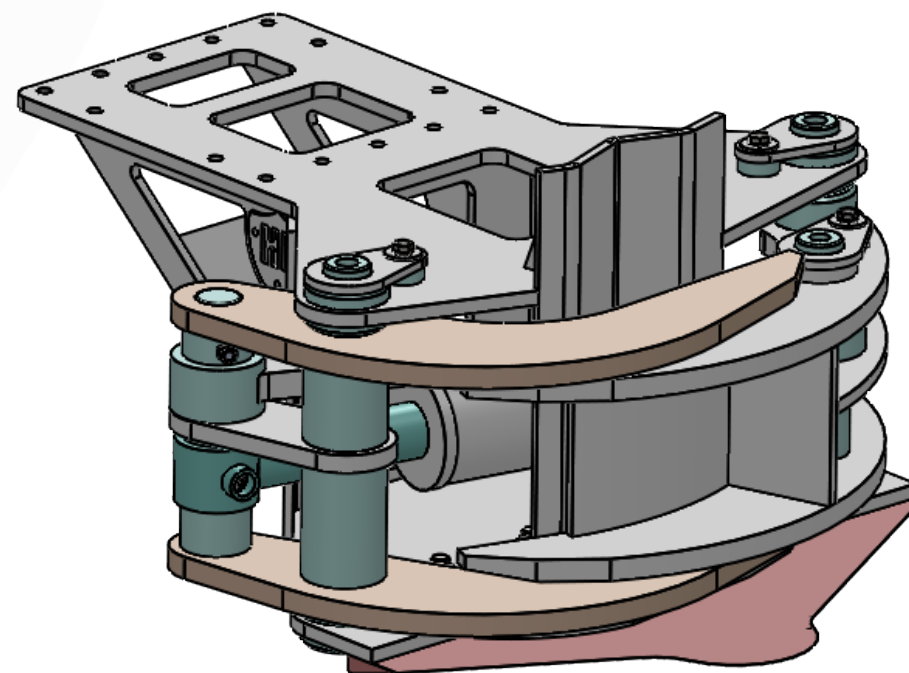
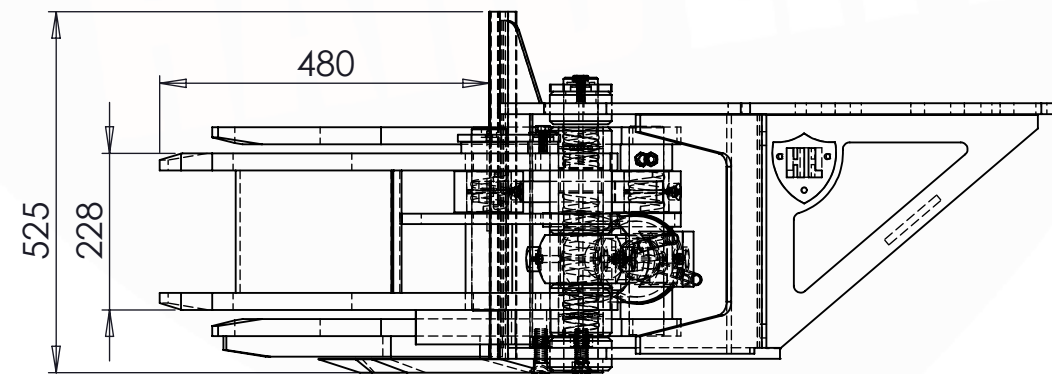
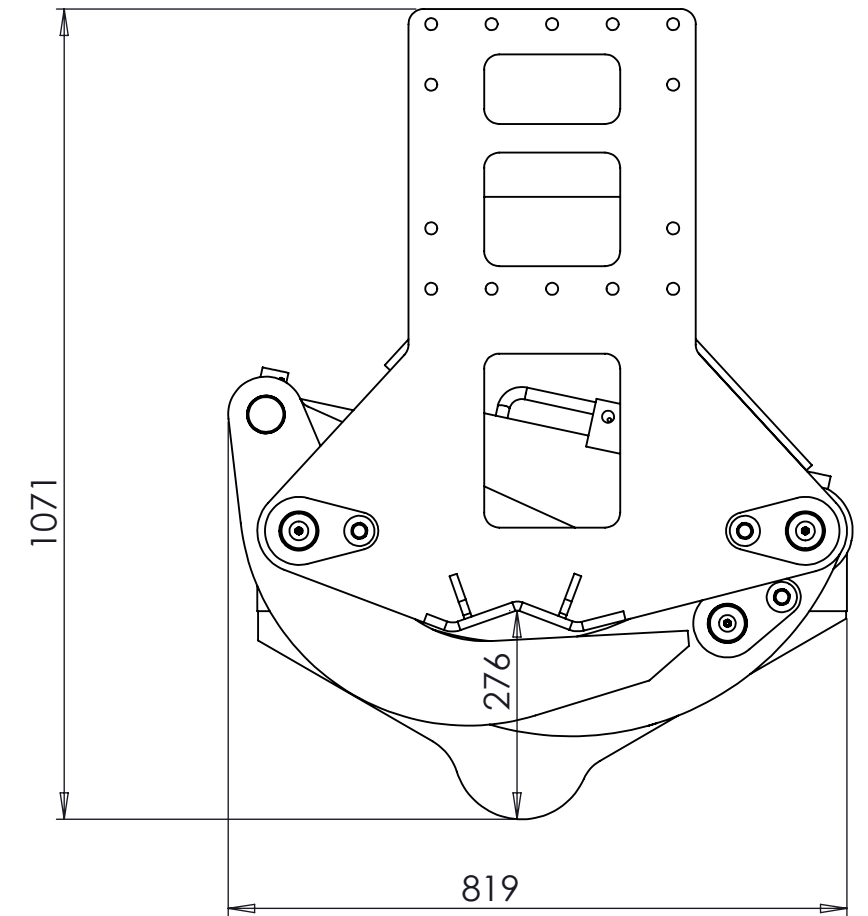
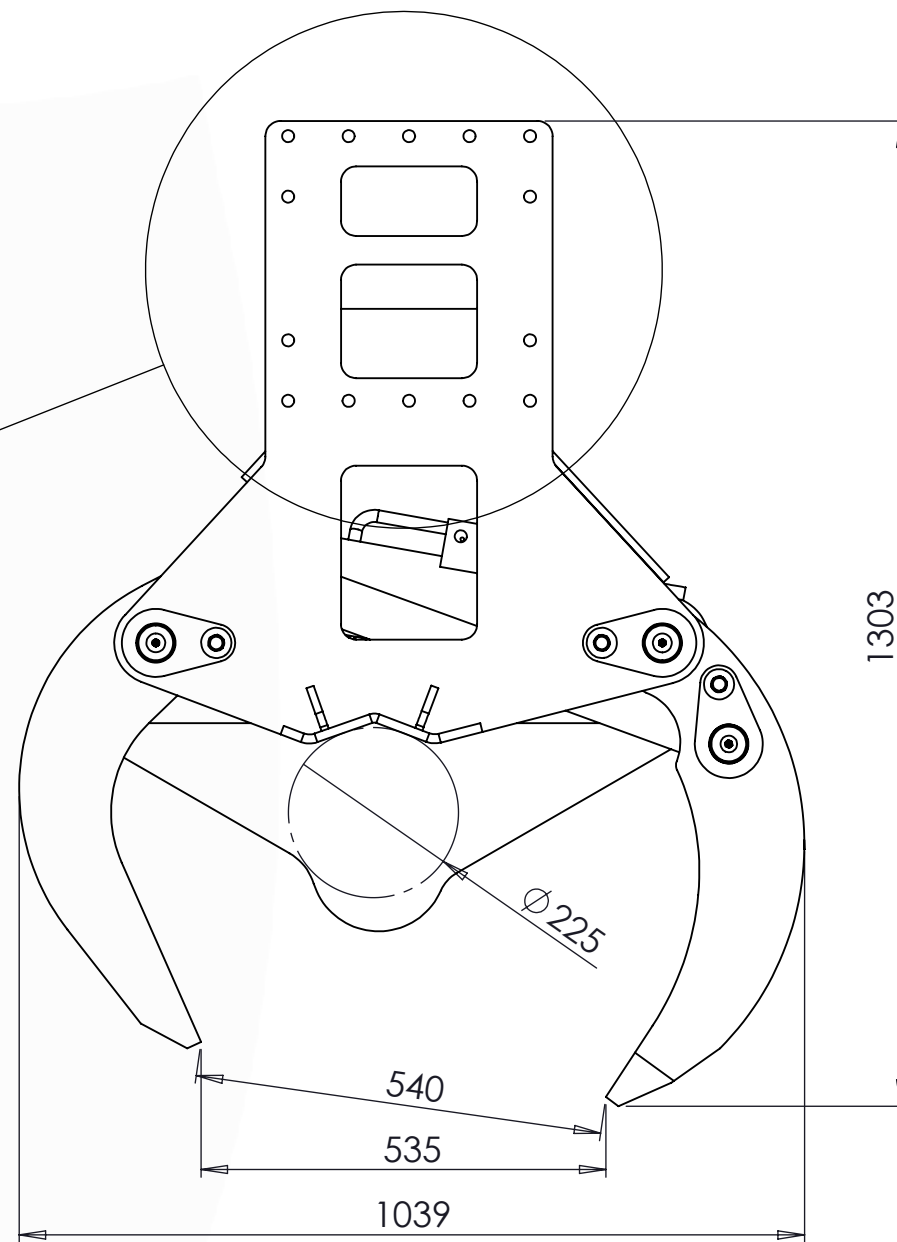
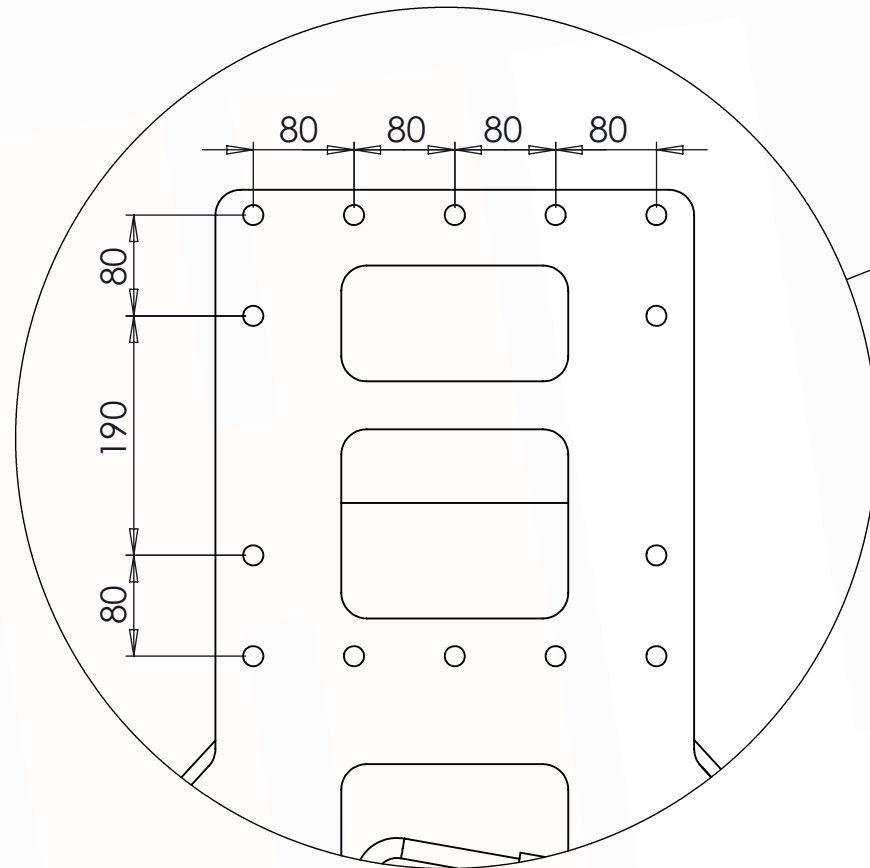
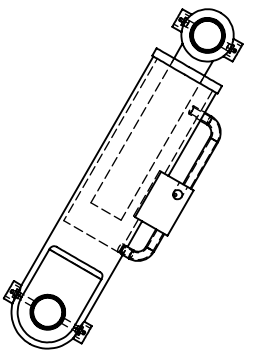


HEADSTOCK



Cylinder:

Bore Ø: 110mm
Rod Ø: 60mm
Closed Centres: 550mm
Stroke: 180mm
Ports: G3/8" BSP



Part No : 060-TSH

Machine Class : 4-9 Tonne

Product : Tree Shear

Weight : 303 kg

This drawing is the sole property of Hardlife (UK) Ltd.

	S355		HB400		HB500
	EN8		HB450		CAST ALLOY