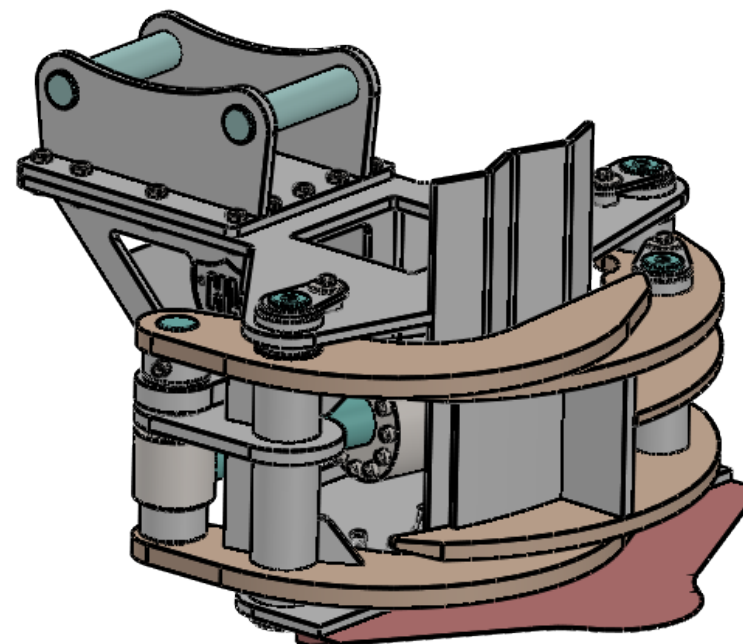
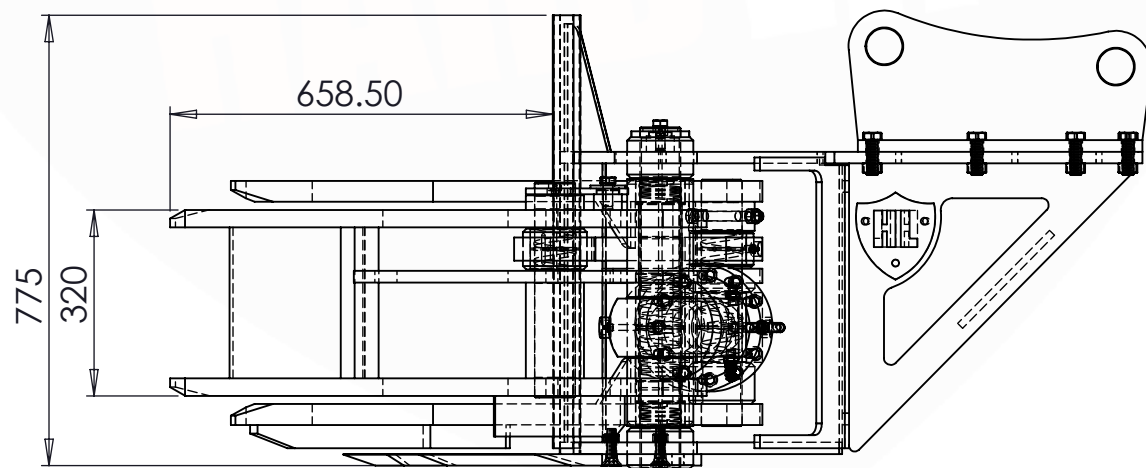
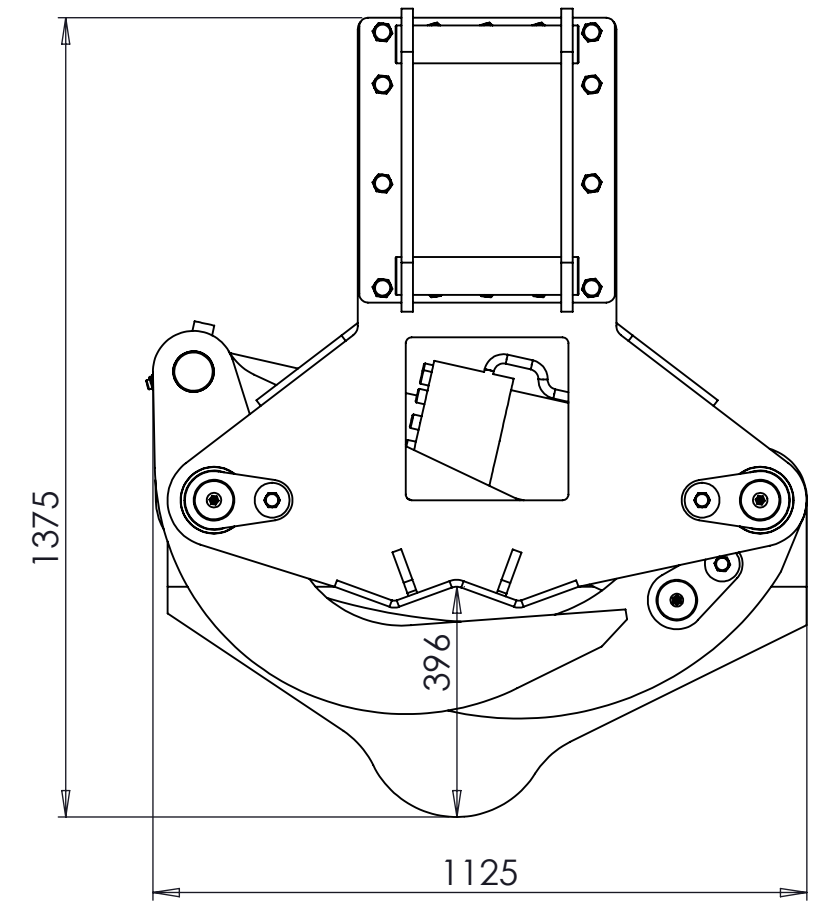
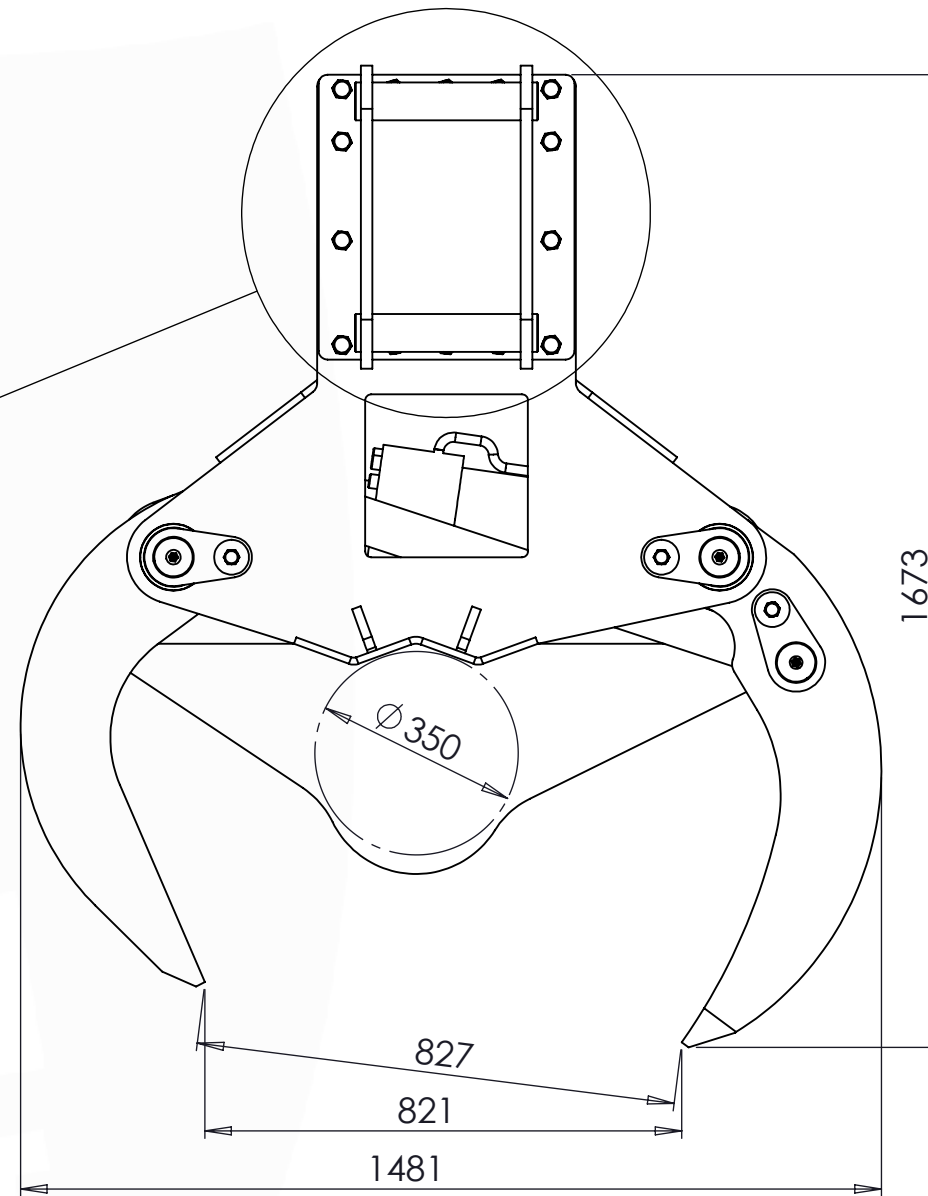
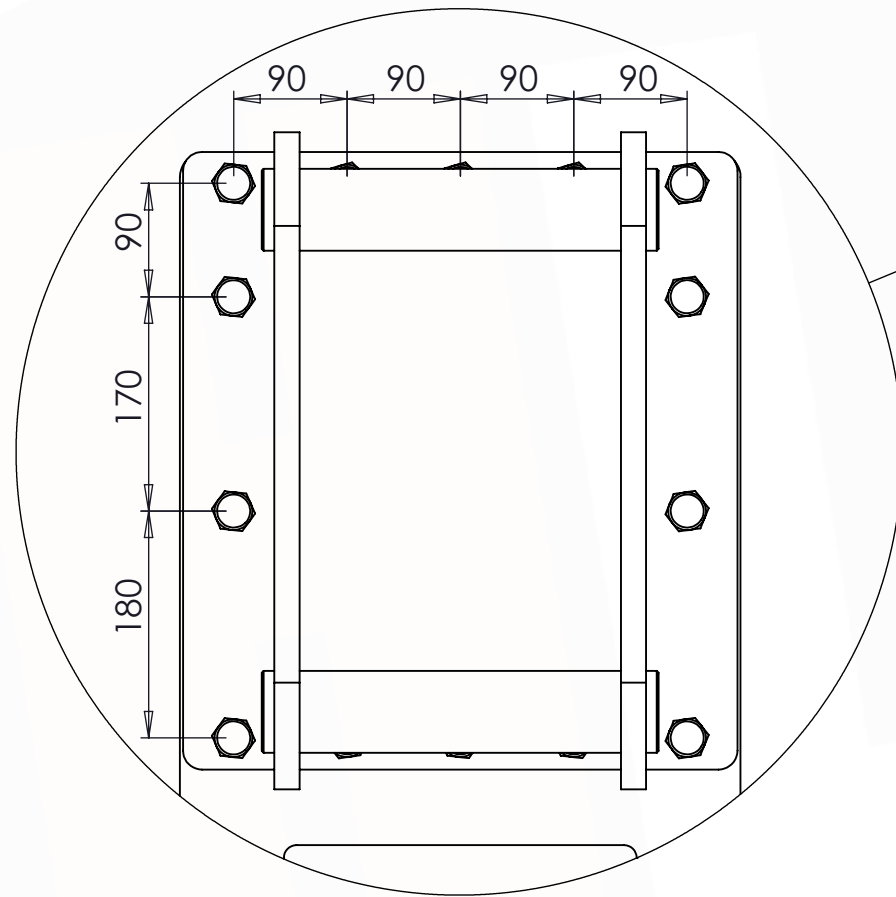
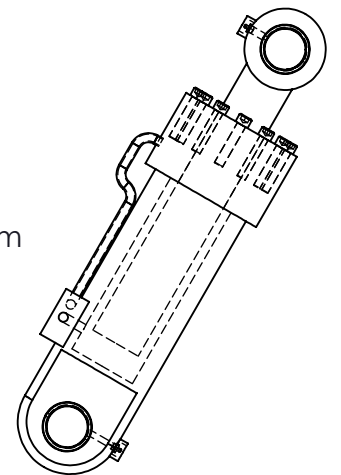


# HEADSTOCK



## Cylinder:

Bore Ø: 120mm  
Rod Ø: 90mm  
Closed Centres: 750mm  
Stroke: 90mm  
Ports: G1/2 BSP



Part No : 100-TSH

Machine Class : 10-22 Tonne

Product : Tree Shear

Weight : 856 kg

This drawing is the sole property of Hardlife (UK) Ltd.

	S355		HB400		HB500
	EN8		HB450		CAST ALLOY